

DWG. NO.

4.16

PREPARED BY:

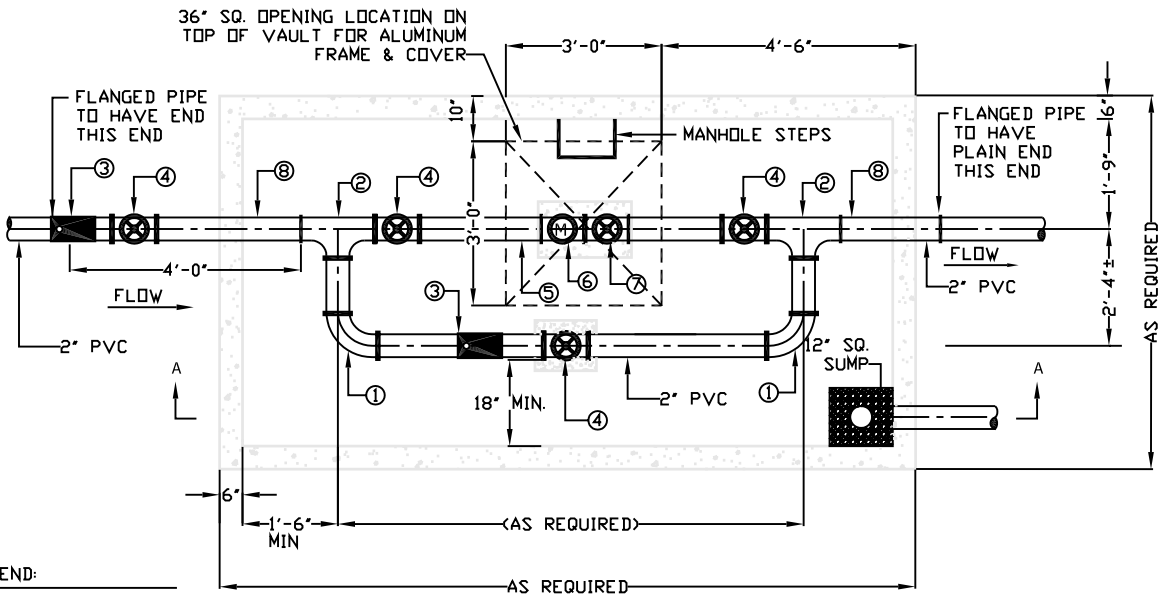
The City of North Augusta

ENGINEERING DEPARTMENT

P.O. BOX 6400, 400 E. BUCHA VISTA AVENUE
NORTH AUGUSTA, S.C. 29861
(803) 441-4223

REVISIONS

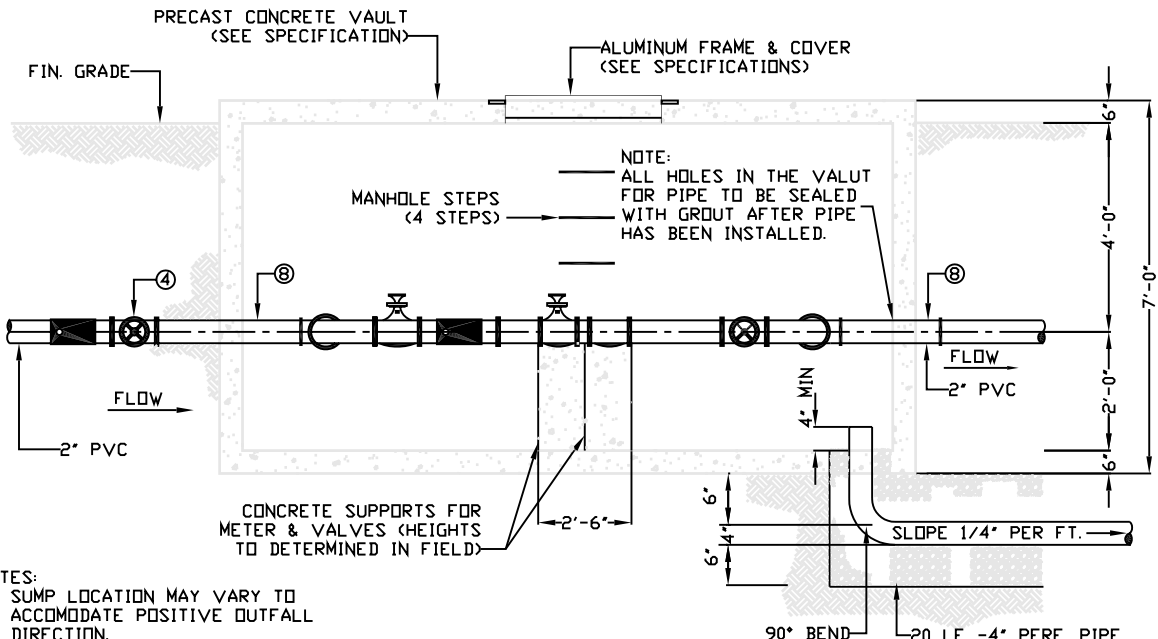
DATE	BY	DESCRIPTION
01/30/04	CKC	CREATED



LEGEND:

- ① - 2" -90° BEND
- ② - 2" TEE
- ③ - STEEL COUPLING
- ④ - 2" VALVE
- ⑤ - 2" STRAINER
- ⑥ - 2" TURBO WATER METER (SEE SPECS.)
- ⑦ - 2" PRESSURE REDUCING VALVE (SEE SPECS.)
- ⑧ - 3/4" ALL THREADED RODS-BOLTED THRU WALL

PLAN



NOTES:

1. SUMP LOCATION MAY VARY TO ACCOMMODATE POSITIVE OUTFALL DIRECTION.
2. ALL CONNECTIONS IN VAULT TO BE FLANGED. PIPING TO BE DUCTILE IRON.
3. COAT ALL ALUMINUM SURFACES IN CONTACT WITH CONCRETE W/ 16 MILS "SAFE-TAR" EPOXY CEMENT BY SOUTHERN COATINGS.

SECTION "A-A"

2" WATER METER, BY-PASS & VAULT DETAILS

NOT TO SCALE