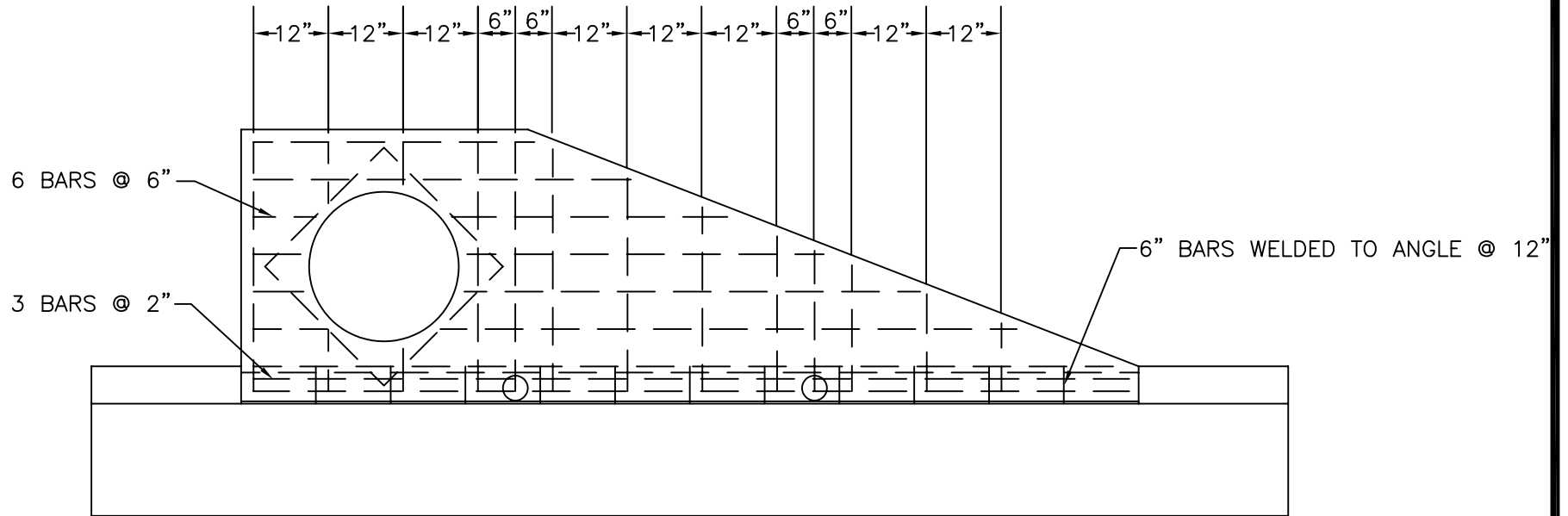


**NOTES:**

1. ALL CONCRETE TO BE 3000 PSI.
2. IF DEPTH EXCEEDS 4', INSTALL STEPS.
3. BOX DIMENSIONS MAY INCREASE TO ACCOMMODATE PIPE SIZES LARGER THAN 18". SEE CHART IN DWG NO. 6.01E.
4. ALL REBAR TO BE #5.
5. MAINTAIN 1 1/2" CLEAR SPACE BETWEEN STEEL AND BOTTOM OF TRAP TOP.



**REBAR SCHEDULE**

NOT TO SCALE



**North  
Augusta**

*South Carolina's Riverfront*

**REVISIONS**

DATE	BY	DESCRIPTION

PREPARED BY:

**The City of North Augusta**

• ENGINEERING DEPARTMENT •

P.O. BOX 6400 400 E. BUENA VISTA AVENUE  
NORTH AUGUSTA S.C. 29861  
(803) 441-4223

**DWG. NO.**

**6.02**